



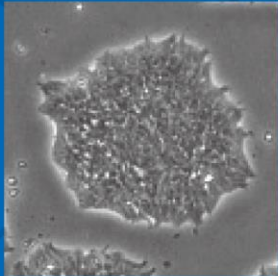
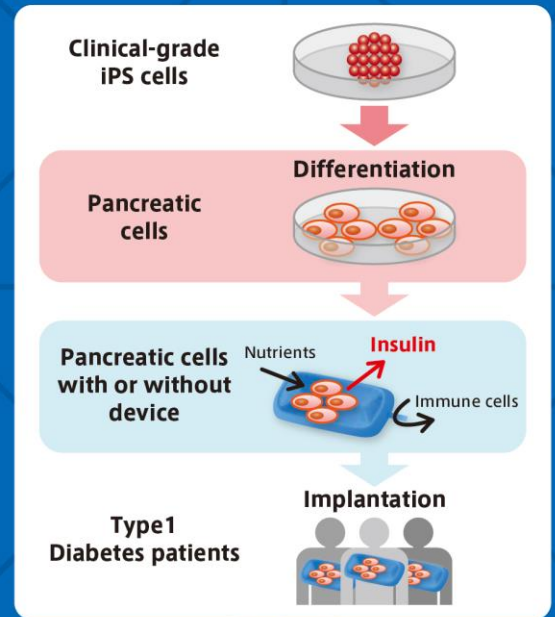
Taro Toyoda



〈Beta Cell Project: Research on Cell Therapy against Type 1 Diabetes〉

Dr. Toyoda's team is conducting research into cell therapy against type 1 diabetes mellitus involving transplants of iPSC-derived pancreatic cells. Their current research aim is to develop new treatments based on islet transplantation, but without the current limitations of such transplantation.

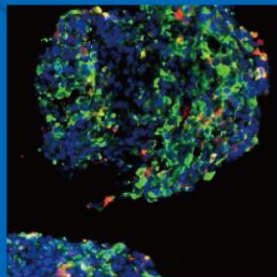
<Concept/Strategy>



iPSC cells



Insulin
Glucagon Nuclei



Endocrine cell clusters

<Progress>

iPSC-derived islet-like cells (iPIC) efficiently normalize blood glucose level in diabetic mouse model

