

Our Access to Medicines approach

A medicine is only as good as the system that delivers it. We adapt international know-how to meet the unique needs of local health care systems, working to understand and address health care infrastructure and capacity across the entire patient journey.

Access to Medicines principles

Patient first

We aim to provide access to our medicines and vaccines where and when they are needed most, based on patients' individual circumstances and unique needs.

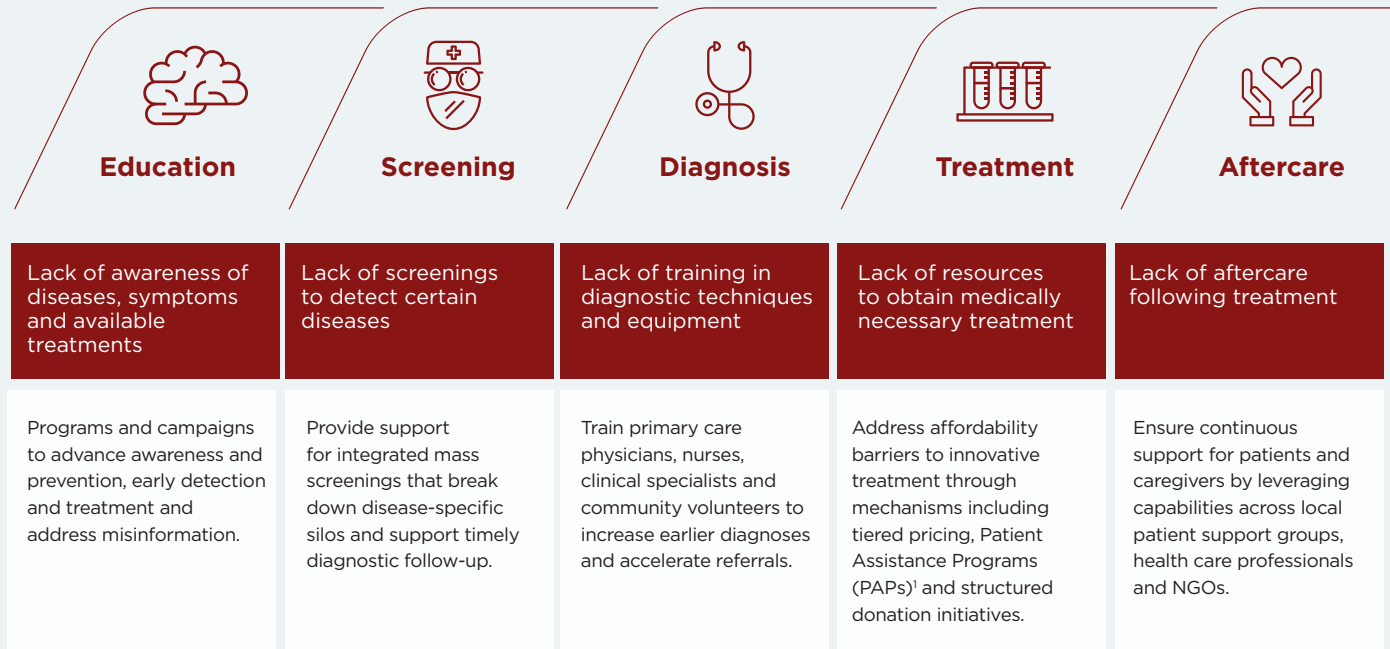
Holistic

We address barriers to access from the start to end of the patient journey: From disease awareness to affordability and treatment to ongoing patient support.

Collaborative

We build and support sustainable health care systems through diverse partnerships and information sharing, co-creating solutions with and for the entire ecosystem.

An 'end-to-end' approach that meets patients at their point of need



¹ Patient Assistance Program (PAP) is a Takeda approach to address affordability of medicine and increase access to treatment through innovative and collaborative financing models.